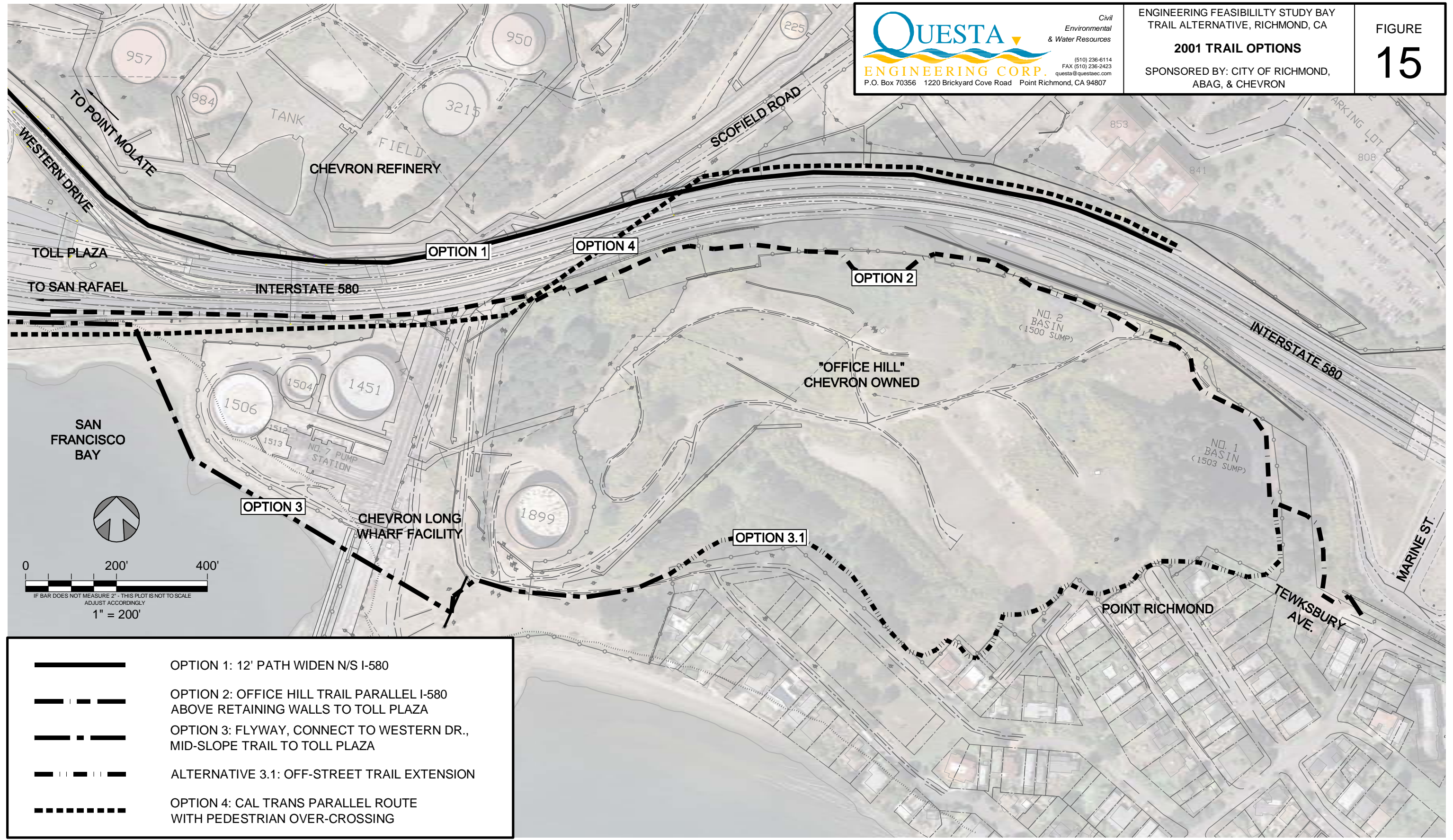


**QUESTA**  
 ENGINEERING CORP.  
 Civil Environmental & Water Resources  
 (510) 236-6114  
 FAX (510) 236-2423  
 questa@questaec.com  
 P.O. Box 70356 1220 Brickyard Cove Road Point Richmond, CA 94807

ENGINEERING FEASIBILITY STUDY BAY TRAIL ALTERNATIVE, RICHMOND, CA  
**2001 TRAIL OPTIONS**  
 SPONSORED BY: CITY OF RICHMOND, ABAG, & CHEVRON

FIGURE  
**15**



SAN FRANCISCO BAY

0 200' 400'

IF BAR DOES NOT MEASURE 2" - THIS PLOT IS NOT TO SCALE  
 ADJUST ACCORDINGLY  
 1" = 200'

- OPTION 1: 12' PATH WIDEN N/S I-580
- OPTION 2: OFFICE HILL TRAIL PARALLEL I-580 ABOVE RETAINING WALLS TO TOLL PLAZA
- OPTION 3: FLYWAY, CONNECT TO WESTERN DR., MID-SLOPE TRAIL TO TOLL PLAZA
- ALTERNATIVE 3.1: OFF-STREET TRAIL EXTENSION
- OPTION 4: CAL TRANS PARALLEL ROUTE WITH PEDESTRIAN OVER-CROSSING